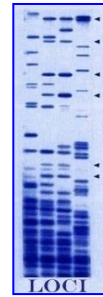


Loci Forensics B.V.

Newsletter

December 2014



Loci Forensics has developed the newest in DNA collection: the **DNA-Stub**.



The **DNA-Stub** is a patent pending sample collection system, designed to retrieve DNA from all types of dry surfaces, including porous (all kinds of textiles, skin ect.) and non-porous surfaces such as knife/door handles and gun grips. Besides this the stub can also be used for the collection of fibers and powders.

The **DNA-Stub** comes in a protective tube. A moisture absorbent granulate is incorporated in the stub holder to guaranty maximum protection and conservation after evidence is collected.



The top of the **DNA-Stub** itself has a special DNA free water-soluble adhesive on a compressible foam carrier. The stub has benefits over using tape for the collection of DNA, an already proven method to capture more DNA than swabbing on porous surfaces. The compressible foam layer guaranties more lifting of DNA material from uneven and textured surfaces.

In addition, this collection method reduces the risk of DNA degradation due to moisture, which is encountered using conventional methods.

Each **DNA-Stub** is individually packed, sealed, made DNA free by ETO treatment and ready to use after opening.

Collection procedure:

1. Open the peel pouch.
2. Remove the transparent protection tube from the stub.
3. Collect DNA by stubbing *.
4. Replace the transparent protection tube on the stub and send for analysis.

*Do not leave the stub outside its transparent protection tube for longer than 2 minutes; the adhesive is highly hygroscopic.



How to retrieve evidence from the **DNA-Stub**:

Pour a small amount of water on the adhesive of the stub. Leave for 30 seconds and then remove the adhesive layer either by using a swab or cutting the stub through the foam layer from the stub holder with a scalpel.



3005020 - DNA-Stub, Individually DNA-Free (ETO) packed, 40 pcs - € 100,00.

Bezoek onze website voor het DNA-Rapport ([Download Center](#))